

# FIRE DESIGN SOLUTIONS

ecosmart<sup>™</sup>  
Fire



# WHAT IS ECOSMART FIRE?

**An EcoSmart Fire is a bespoke piece of industrially designed fire furniture that exudes warmth, burns cleanly, and defines a space without dominating it.**

From luxury resorts to commercial showrooms and residential settings, EcoSmart is embraced by the world's leading architects, designers, developers, landscapers – and style savvy homeowners.

FUELLED BY  
e-NRG  
BIOETHANOL

BURNS CLEAN  
NO SOOT  
NO SMOKE  
NO ASH

INDOOR &  
OUTDOOR  
MODELS

OVER 90%  
EFFICIENCY

NO GAS,  
NO FLUE, NO  
ELECTRICITY

QUICK & EASY  
INSTALLATION

# WHY CHOOSE ECOSMART FIRE?

**Independently certified safety features; endorsed by design, construction and landscape professionals; free from utility or flue restrictions; loved by homeowners; kind to the environment – there are countless reasons why choosing an EcoSmart Fire is the smartest fireplace option.**

Architecturally designed to enhance contemporary living and commercial spaces, EcoSmart Fire adds warmth and ambiance with a clean-burning, flickering flame that is free from soot, smoke or ash. Now that's what we call EcoSmart.



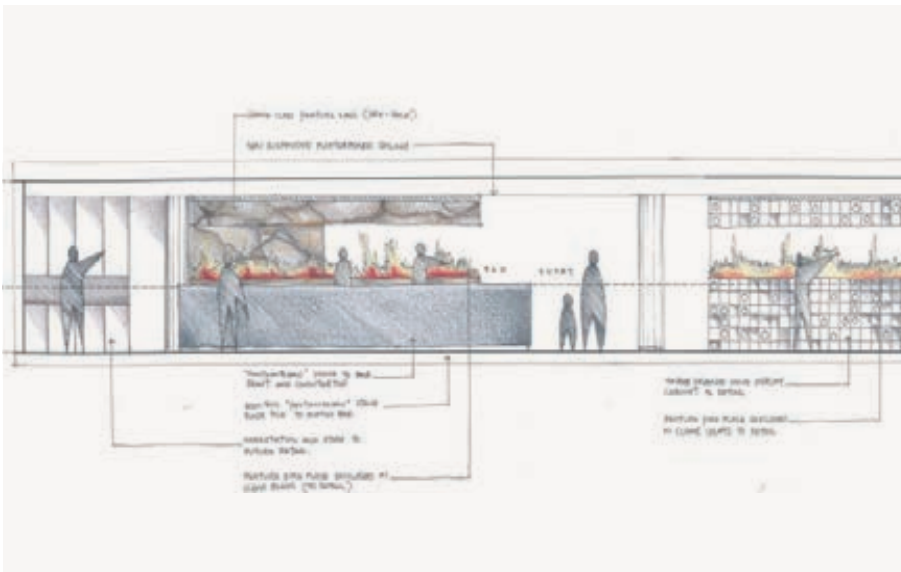
### Ultimate Design Flexibility

With the uniquely versatile EcoSmart Fire, you have the building block to help bring your design to life.

Because bioethanol is clean burning, EcoSmart Fire models do not need a chimney or a flue, or a utility connection – offering the ultimate in fire design simplicity and flexibility.

### Committed to Safety

Researched and developed by our in-house design team, tested by independent facilities, and fabricated according to our own exacting standards – the EcoSmart Fire is an expression of our commitment to creating the best. The combination of rigorous testing, independent certification and leading safety features is why the EcoSmart Fire gives you priceless peace of mind.



### Recognised World Wide

It's one thing for us to believe in our own product but quite another when the world's leading architects, designers and landscapers embrace it.

EcoSmart Fire doesn't just add to a space, it defines it. When quality, style, reliability and safety are paramount, EcoSmart Fire is the fireplace of choice for connoisseurs of style and substance.

Review our extensive gallery of installations on our website [ecosmartfire.com](http://ecosmartfire.com)

### Personalised Support

Our team works closely with professionals such as architects, designers, landscapers, builders, developers and, of course homeowners to ensure the most appropriate EcoSmart Fire models are selected for each individual project.

### Eco-friendly

EcoSmart Fire uses the cleanest, most efficient fuel source on the market: bioethanol. Bioethanol is an eco-friendly fuel that burns clean and has a minimal carbon footprint. The fact that no flue or chimney is needed means most of the heat generated by an EcoSmart Fire remains in the room.

[e-nrg.com](http://e-nrg.com)



# WE HAVE YOUR FIRE DESIGN SOLUTION

**Whether you're creating a custom fireplace feature, renovating an existing hearth, or looking for an out-of-the-box system, we have a stylish solution to suit your needs.**

The EcoSmart Fire collection of bioethanol fireplaces is incredibly versatile and gives you absolute installation flexibility to create exactly what you want, without any hassles or restrictions.

From hand crafted freestanding pieces of fire furniture, to built-in custom designs for bespoke settings - EcoSmart Fire offers a complete collection of versatile and award-winning fireplace solutions that make having an open flame incredibly easy, whatever the setting, at the same time as being good for the environment.

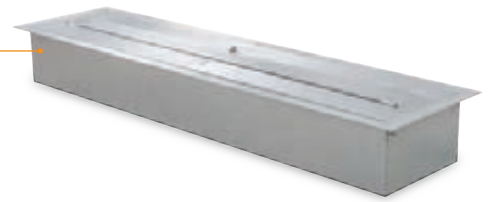


## Built-in

Elegantly designed and robustly constructed, EcoSmart's bespoke built-in fireplaces add a dramatic showpiece to residential and commercial premises.

Offering optimum heat output, flame enhancement and safety, their high quality, stainless steel and toughened glass construction complements a wide range of building materials and finishes.

Free from traditional installation restrictions such as plumbing, roof work, and gas or electricity connections, they provide unlimited design options for builders, architects, interior designers and homeowners.



## Freestanding

**Freedom, flexibility and eco-friendly functionality – EcoSmart's freestanding bioethanol fireplaces add warmth, style and ambiance to indoor living and outdoor entertaining spaces.**

Cleverly refashioning the traditional fireplace concept into a piece of flexible fire furniture means that you can now enjoy the simple pleasures of an open fire whenever and wherever you want it.

From classic designs to see-through centrepieces, this collection of freestanding fireplaces is defined by its streamlined construction, sophisticated ignition system and sustainable fuel source. Boasting minimalist chic and maximum functionality, EcoSmart's fire solutions create an architectural focal point even when they are not in use.

# Built-in

## Bioethanol Burners

The core of all of our fireplaces, offering the ultimate in design and installation flexibility.

The residential and commercial creative design possibilities are endless when you use a flueless, vent-free ethanol burner.



## Fireplace Inserts

Elegantly designed and robustly constructed, our fireplace inserts are available in a range of styles and finishes. Choose from six versatile styles in our Flex Fireplace Series, or our Curved Fireplaces.

Our fireplaces do not require any flashing, roof work or plumbing, which significantly reduces installation costs and time. Installed with ease, these fireplaces can be integrated within cabinetry or a fireplace setting, EcoSmart fireplaces offer the perfect blend of functionality and design aesthetics.





# Freestanding



## Fire Tables

Create a stunning yet soothing indoor or outdoor atmosphere with the help of an ethanol fire table. Our multi-functional tables are a truly remarkable portable heat source. More than accents, our versatile fire tables provide a welcoming destination and make entertaining ever so easy.



## Fire Pits

A cosy and warm fireplace will perfectly complement your contemporary indoor or outdoor space. Available in different shapes, sizes and finishes, you're guaranteed to make memories around our ethanol fires.

## Designer Fireplaces

Enrich the contemporary aesthetics of today's residential and commercial environments with a relocatable piece of fire furniture. With no installation or building works required, simply unpack, put the fireplace into position, and off you go.



# Accessories

Our clean and simple fireplace screens, fixing systems, fireplace covers and accessories have been designed to improve the safety of operating an open fireplace without compromising the view to the flame.



**Longitude 131°, Australia**  
**Model: XL700**

This luxury resort overlooking Uluru in Outback Australia incorporates EcoSmart's fire features in its elevated tents, enabling guests to stay warm while soaking up the celestial serenity.

Photo: George Apostolidis

**Built-in**

# **BIOETHANOL BURNERS**





**Midorinokaze Resort Kitayuzawa, Japan**  
**Model: XL900**

The Noguchi Collection Relaxation Library at the Midorinokaze Resort features ultra-comfortable sofas arranged to put your mind and body at ease and while EcoSmart's mesmerising, flickering flame creates an enticing atmosphere.

“The fireplace is the center element of the lounge, creating a focal point that divides the seating groups. It’s the feature that can be seen from all areas of the space and enhances the warmth of the walnut panelled room.”

MEAGHAN WREN,  
MEYER DAVIS STUDIO

**AKA Hotel, New York USA**  
**Model: XL700**

The intimate lounge artfully complements the traditional warmth of New York’s AKA Sutton Place with a relaxing yet of-the-moment ambiance. Numerous cozy seating areas, a spectacular marble bar and open fireplace created with an XL Burner completes the stylish scene.



Read more about this case study at [ecosmartfire.com](https://ecosmartfire.com)







**Private Residence, Australia**  
**Model: XL700**

A minimal design approach subtly highlights a flame making it the focal point of the space. In this installation in the Mornington Peninsula, the use of neutral colours of black, white and grey offers an inviting yet simple setting where a warm flame can be enjoyed in all areas of the room.





Private Residence, Australia  
Model: XL700

A beautiful installation executed by Webbs Joinery and designed by Connors & Co for a client in Tamarama, Sydney Australia. This project features the EcoSmart XL700 Burner in black including Twin Feet Fixings supporting a custom made fire screen.

**Floreat Residence, Perth Australia**  
**Model: XL900 x 2**

Pairing multiple burners creates an elongated flame that provides a visual counterbalance to particularly large spaces and rooms with high ceilings.



**Churchlands Residence, Perth Australia**  
**Model: XL900**

At the centre of this custom built home is a fire design that inspires and encourages family gathering without a TV in sight.







**Scott Salisbury Homes, Australia**  
**Model: 1200DB with XL900 Burner**  
**Achieve similar look with the XL900 Burner**

A great example of connecting the indoor and outdoor spaces. This two-way Fireplace can be seen and experienced from the lounge and outdoor areas simultaneously.

Photo: Scott Salisbury Homes



**Private Residence, Japan**  
**Model: XL900 x 3**

This fireplace showpiece featuring three EcoSmart XL900 Burners positioned side-by-side creates a captivating living room entrance. Stacked stone surrounds are softened by the smoke- and soot-free flickering flame, which is fuelled by eco-friendly e-NRG bioethanol.



“The fire needed to offer both visual and physical comfort so patrons can sit around the fire pit with a glass of wine. The fire works well with the pit design and natural stone pebbles to create a gathering space.”

VICTOR CHEUNG,  
ARCHITECT

Junction Moama, Victoria Australia  
Model: XL500 x 3

Hospitality creates an ideal environment for guests, and accounts for how the food, drink and aesthetics shape mood. In this case, EcoSmart's atmospheric fire feature further enhances the restaurant's reputation as a "gathering place that celebrates the region's finest."



Read more about this case study at  
[ecosmartfire.com](https://ecosmartfire.com)





“ We also look at longevity and durability of the product. I started looking at all the specifications for EcoSmart and that formed the basis and we built around it.”

JEFFREY STRNAD,  
BEACH HOUSE DESIGN  
AND DEVELOPMENT



Hillside Residence, Beverly Hills USA  
Model: XL900 x 3

Beach House Design and Development was engaged to construct a combination fireplace and AV cabinet within a space made up of 12" poured-in-place concrete walls and a rooftop pool above – with absolutely no way to vent the fireplace. Enter EcoSmart Fire.



Read more about this case study at  
[ecosmartfire.com](http://ecosmartfire.com)

**Private Residence, Japan**  
**Model: XL900**

Drawing the gaze towards traditional Japanese seiza-style furniture placement is EcoSmart's low-slung fire feature, which showcases a rectangular XL900 Burner that's ideal for showroom settings. Its flue-less construction provides endless installation freedom for merchandising professionals and trade show designers.







Rising Glen, USA  
Model: XL900 x 2

For acclaimed Los Angeles architect Michael Parks, the vision behind 'Rising Glen' – a striking home in the Hollywood Hills – was to create a warm, liveable, inviting paragon of modern architecture.



**Toca Madera, USA**  
**Model: XS340 x 2**

Located in a Los Angeles restaurant “conceived around a communal dining philosophy”, EcoSmart’s twin bioethanol burners create a captivating see-through effect between eating and entertainment spaces. Enhancing Hollywood’s latest hotspot is a series of flickering flames that work well with the earthy colour tones.





**St Regis Hotel, Istanbul Turkey**

**Model: XL500 x 2**

**Opposite Page: XL900 x 3**

Istanbul's modernist Art Deco-influenced St. Regis uses EcoSmart's stunning fire feature in its Petit "O" Bar (above), which offers a formal setup during the day before transforming into a relaxed lounge area when the sun goes down.

Located next door is the hotel lobby (right), which greets guests with a wall of flickering flame courtesy of three XL900 Burners. EcoSmart's longest linear burner creates a stunning horizontal piece of architecture when grouped for maximum effect.







**Fujiya Mansions, Hong Kong**  
**Model: XL900 x 2**

You know you've 'arrived' when you walk into a home and see this masterpiece. Captivating from both sides, EcoSmart's hero of the room also houses an entertainment system behind its beautiful folding doors.



Read more about this case study at  
[ecosmartfire.com](https://ecosmartfire.com)

“The burners  
take the piece  
from ordinary to  
extraordinary.”

ROSIE BLAY,  
LIQUID DESIGN







**Keio Plaza Hotel, Japan**  
**Model: XL900**

This Japanese hotel is known for its architectural design, streamlined facilities and world-class style – the same qualities that can be found in EcoSmart's XL900 fire feature.



**Hippo Creek African Grill, Perth Australia**  
**Model: XS340 x 3**

Cleverly tailored EcoSmart Burners are helping set the scene for a vibrant new African grill themed restaurant in Perth.



*Read more about this case study at*  
[ecosmartfire.com](http://ecosmartfire.com)



**Restaurant La Cave, Japan**  
**Model: XS340 x 2**

Transforming a simple table top into a dynamic design feature is seamless with EcoSmart's discreet bioethanol burner, which has been cleverly incorporated into a non-combustible platform. The 2.5L ethanol burner delivers a beautifully long-lasting flame - perfect for busy bars and restaurants.



**Rising Glen, USA**  
**Model: XL900**

A functional room divider becomes a stunning design feature with a peninsular fireplace that helps define the space without dominating it. Glass screens protect the flame from breezes without obstructing the view while the smoke-free flame ensures the white walls and chic furnishings remain unsullied.

 *Read more about this case study at [ecosmartfire.com](https://ecosmartfire.com)*





**Sky and Space, USA**  
**Model: XL900**

Architect & Interior Designer: Andrew Mikhael  
Photographer: Jeffrey Kilmer

“ Nothing looks or performs as well as EcoSmart. Having a flue-less fireplace also meant a huge amount of savings on space and construction expense. We could place the fireplace in an area that would have been impossible to have a fireplace in if we were to use traditional fireplaces that need to be vented.”

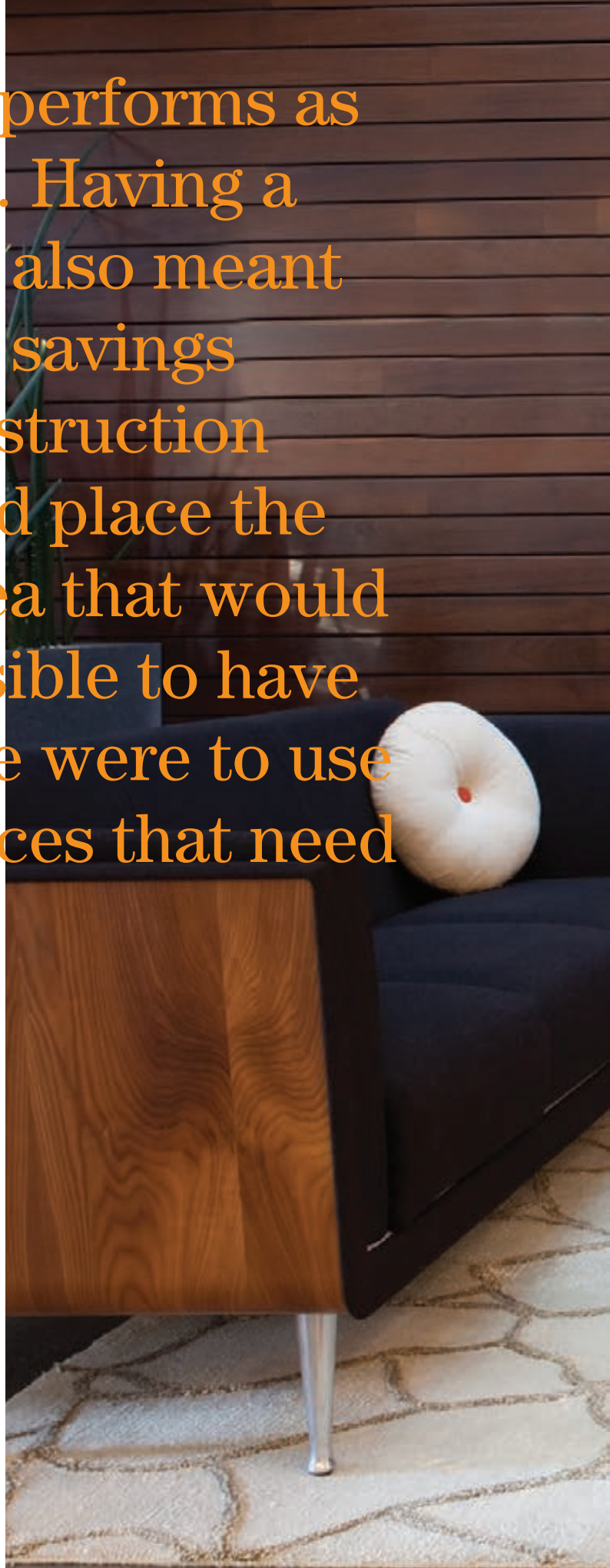
MARCO DIMACCIO, PRINCIPLE DESIGNER  
AT PUNCHHOUSE DESIGN GROUP

Private Residence, Santa Monica, California USA  
Model: XL900 x 2

The presenter of US documentary show 'Our America' had clear views in the design of her new home – and it has now become the first-ever energy neutral residence in Santa Monica, California.



Read more about this case study at  
[ecosmartfire.com](https://ecosmartfire.com)









**The Brindabella, Perth Australia  
Model: XL900**

This stunning double-sided fire feature is testament to what can be achieved when an ingenious design satisfies both the functional and aesthetic demands of a brief.



**The Brindabella, Perth Australia**  
**Model: XL900**

This outdoor entertaining area designed by Webb & Brown-Neaves is indicative of their commitment to building every home as if it were their own.



**Private Client, Brisbane Australia**  
**Model: XL900**

An expansive, exposed terrace of a Brisbane high-rise apartment has been transformed into a stunning, cosy environment with different alfresco living 'zones' complete with an open fire.  
Photo: Kylie Hood Photography



Read more about this case study at  
[ecosmartfire.com](https://ecosmartfire.com)

“It really is the ideal choice when incorporating fire into a space that needs to be ventless.”

MEAGHAN WREN,  
MEYER DAVIS



**Paramount Hotel, New York USA**  
**Model: XL900 x 3**

The lobby centerpiece in New York's Paramount Hotel, which is located in the theatre district, could be described as "dramatic" courtesy of three EcoSmart XL Burners and polished steel sheets.  
Photo: Michel Arnaud



Read more about this case study at  
[ecosmartfire.com](http://ecosmartfire.com)







Private Residence, Australia  
Model: XL1200



Commercial Space, Japan  
Model: XL1200

“I put forward the idea of the EcoSmart Fire to bring more warmth and character into the room. I believe fire is engaging and inviting”

LEE HARDCASTLE,  
ENIGMA INTERIORS



Enigma Interiors, Australia  
Model: XL900

EcoSmart Fire has been cleverly used to create some distinctive kitchen designs – and this one in Queensland, with its emphasis on quality fittings and appliances, is no exception.




Read more about this case study at  
[ecosmartfire.com](http://ecosmartfire.com)



Stilhof Design Centre, Germany  
Model: XL900 x 3

Designer fireplaces incorporating EcoSmart Fire are a key component of the innovative Stilhof Showroom in Munich, which has become an international design hub for modern architecture. Photo: G. Hammerbacher





“Fire was incorporated as a dramatic contrasting element to water, as the two traditional elements help create an aesthetic tension and drama at night.”

JASON CAMENZULI,  
CLP ARCHITECTURE PTY LTD

**Portsea Private Pool Pavilion, Australia**  
**Model: XL900**

The elements of fire and water conspire to create a spectacular setting for a floating pool pavilion in Portsea, Victoria, where an EcoSmart XL900 Burner has been used.

Architects: Jason Camenzuli & Peter Collings from CLP Architecture

Builders: KLE Building Group

Joinery: Krueger Shopfitters

Photo: Jason Camenzuli from CLP Architecture



Read more about this case study at [ecosmartfire.com](http://ecosmartfire.com)

**Private Residence, UK  
Model: XL700**

Purpose-designed baffle inserts allow homeowners to regulate and stabilise the flame while simultaneously increasing fuel efficiency.



**Private Residence, UK  
Model: XL700**

EcoSmart Fire's elongated flame creates an instant focal – and talking – point for living spaces.





**City Skyline**  
**Austin Texas USA**  
**Model: XL900 x 2**

Two XL Burners set within a sandstone wall perfectly complement the spaciousness of the seamless indoor/outdoor living areas in this Texan home.

Image: Alexander Stross - Strossarts.com



*Read more about this case study at [ecosmartfire.com](http://ecosmartfire.com)*



**Buildwise, Australia**  
**Model: XL900**

An increasingly popular trend - integrated units featuring open fire with audio visual systems - is easy with EcoSmart's zero-clearance, flue-less fire solutions.





**Longitude 131°, Australia**  
**Model: XL700**

This luxury resort overlooking Uluru in Outback Australia incorporates EcoSmart's fire features in its elevated tents, enabling guests to stay warm while soaking up the celestial serenity.

Photo: George Apostolidis



Read more about this case study at  
[ecosmartfire.com](https://ecosmartfire.com)



**McGrath Real Estate Office, Australia**  
**Model: XL1200**

Designed by The United Collective and built by The Outfit Group for McGrath real estate agency, this custom joinery is beautifully contrasted with hints of golden accents and a lively orange flame at its center. The use of dark tones and white marble surround creates an elegant focal point that is subtle, yet visually striking.



Hilton, New Zealand  
Model: XS340 x 3



**The Estreal, Japan**  
**Model: XL700 x 4**

A sophisticated take on the traditional fireplace, this indoor fire feature utilises four elongated XL Burners to create a captivating conversation pit that attracts guests with its flickering flame and soothing warmth.

“I use EcoSmart Fire burners because they’re beautifully and thoughtfully designed, well-built and clean burning, which embodies the sustainability values I adhere to in my work.”

JAMIE HUFFMAN,  
FURNITURE DESIGNER

Private Residence, California USA  
Model: XL700 x 2

San Diego custom furniture designer Jamie Huffman has long embraced the element of fire, often incorporating them into his innovative designs.



Read more about this case study at [ecosmartfire.com](https://ecosmartfire.com)





**Nagoya University of Commerce & Business, Japan**  
**Model: XL900 x 3**

A traditional wood-burning hearth is modernised with an EcoSmart fire feature comprised of three linear XL900 Burners that create one long impressive flame.







**[m]eatery, Wollongong Australia**  
**Model: XL500 x 4**  
*(Featuring: Twin Feet Fixings and Custom Fire Screens)*

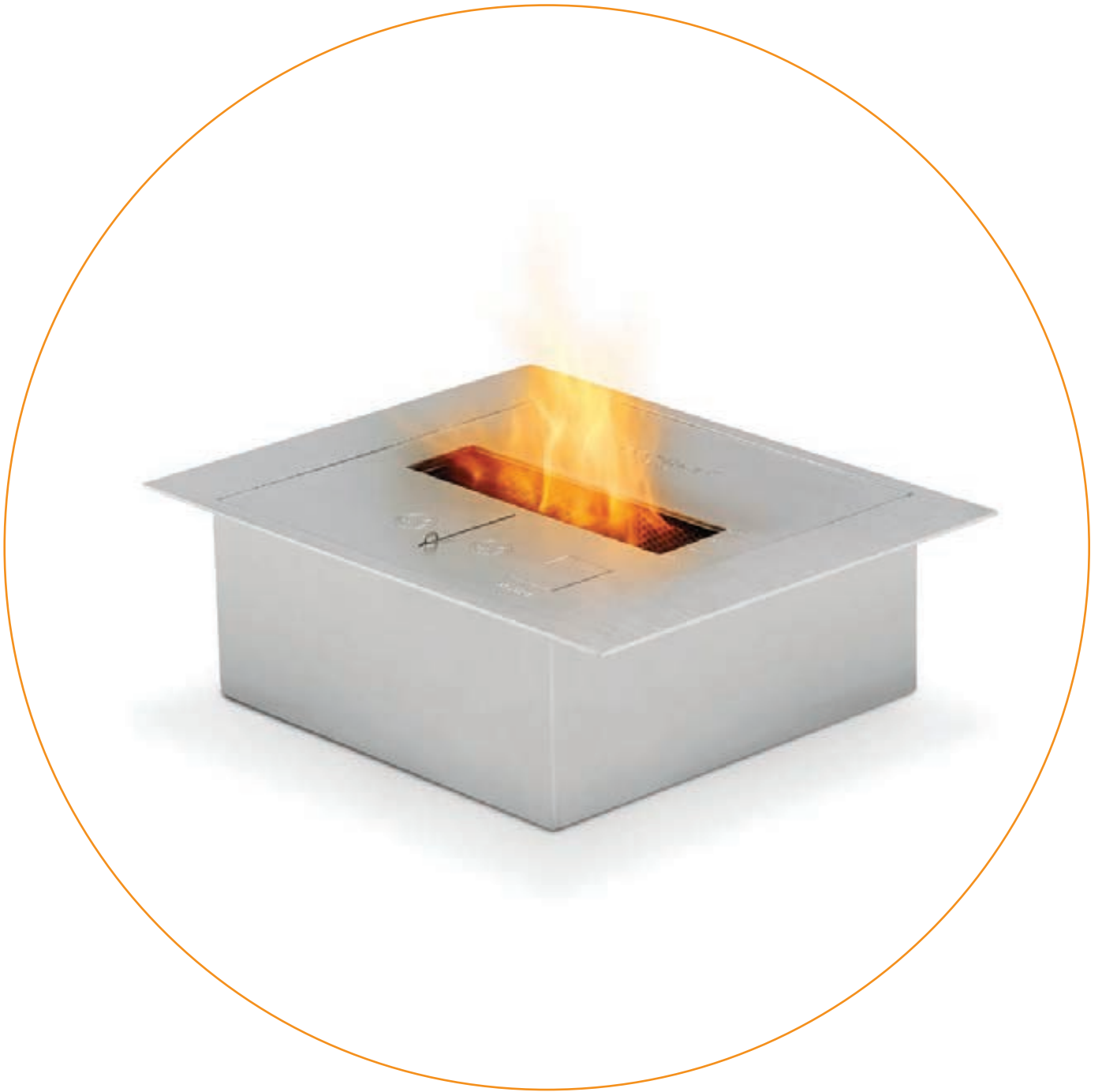
This installation has stood the test of time. Formerly Rocksalt Bar & Grill, now [m]eatery, the fire re-design was the only element that was retained in the redesign.



Read more about this case study at [ecosmartfire.com](http://ecosmartfire.com)

“The EcoSmart fires are just so versatile in terms of how you can use them in a design, they look stylish, have a compact design, aren't messy and don't need to be vented. I'm looking at including them in my next project.”

CRISTINA HOFMAN,  
INTERIOR DESIGNER



**The Lake View Toya Nonokaze Resort, Japan**  
**Model: BK5**

EcoSmart provides the essential element of fire in this spa resort surrounded by water and overlooking Nakajima Island. Complementing the serene setting is a quiet, clean-burning flame that uses eco-friendly e-NRG.



“ We loved the simplicity and flexibility of the product’s design, how the ‘system’ worked, and the ease of incorporating it into the fit-out and fixed joinery items.”

KEVIN NG  
BRIAN MEYERSON ARCHITECTS, AUSTRALIA



Hurricane's Grill & Bar, Sydney Australia  
Models: BK5



Read more about this case study at  
[ecosmartfire.com](http://ecosmartfire.com)



**Wyndham Grand Hotel, London UK**  
**Model: BK5**

A five-star all-suite hotel in London is setting a new benchmark in luxury accommodation - with EcoSmart Fire providing distinct focal points.



*Read more about this case study at [ecosmartfire.com](http://ecosmartfire.com)*





**May Fair Bar, London UK**  
**Model: BK5 x 3**

Breathing new life into an old fireplace at the acclaimed May Fair Bar in London has been easily achieved with a series of BK5 EcoSmart Burners.



*Read more about this case study at [ecosmartfire.com](http://ecosmartfire.com)*



**The Long Room, Melbourne Australia**  
**Model: BK5 x 4**

Renowned, opulent Melbourne venue The Long Room is defined by its signature bar and series of EcoSmart Burners set into elongated benches. This results in perfect room dividers and talking points.



**St James Boutique Hotel, London UK**  
**Model: BK5**

Design possibilities are endless when there's no need for a flue or chimney, and the clean burning fuel doesn't emit smoke, soot or ash.

“The fire is safe,  
reliable,  
contemporary  
and elegant.”

REBECCA NG,  
JOSEPH PANG DESIGN CONSULTANTS

Westin Hotel, Sydney Australia  
Model: BK5

An award-winning five star Sydney hotel has created an intimate lounge bar complete with an open fireplace that's providing a touch of 'home' for the guests.



Read more about this case study at  
[ecosmartfire.com](http://ecosmartfire.com)







**Pepe Calderin Design, USA**  
**Model: BK5 x 3**

For Miami-based architect Pepe Calderin, discovering EcoSmart Fire was a defining moment, both for him and his high-end clients.



**Private Residence, USA**  
**Model: BK5**

Vintage fireplaces are seeing a resurgence in popularity within the design community and lending their classic shape to clean burning conversions.



*Read more about this case study at [ecosmartfire.com](https://ecosmartfire.com)*





**Private Residence, Sydney Australia**  
**Model: BK5**

The combination of fire and water makes a dramatic entrance statement for an inner city Sydney home.



*Read more about this case study at*  
[ecosmartfire.com](http://ecosmartfire.com)





**Mandarin Oriental Hyde Park, UK**  
**Model: BK5 x 3**

Dive in and enjoy the fitness facilities of this 5-star luxurious hotel. A haven of wellbeing has been created by Denton Corker Marshall and features calming fire elements to help nurture physical and spiritual harmony.

“The EcoSmart Fire solution has delivered the ambience of a real open fire without the mess or hassle.”

ANGELIKA LUIBLE-GARBOLDI,  
BAU+DESIGN



Allianz Arena, Munich Germany  
Model: BK5 x 3

The Allianz Arena in Munich is the location of an amazing new Cooking Lounge - and it's not just the clients' appliances and technology that are making a statement.



Read more about this case study at  
[ecosmartfire.com](http://ecosmartfire.com)





**Private Residence, Germany**  
**Model: BK5 x 2**

Two EcoSmart Burners perfectly enhance the ambiance of the living area, creating an intriguing fire feature that also provides a subtle separation between adjoining spaces.







“Our EcoSmart Fire was the only source of heating we could use during [Superstorm Sandy] to ensure patients were able to keep warm – and the e-NRG bioethanol was delivered to us reliably throughout this emergency.”

DR LEONARD FARBER  
FOUNDER

Farber Centre, New York USA  
Model: Model: BK5 x 2

Creating a sense of warmth and comfort within a state-of-the-art cancer treatment center in New York was a key focus for architect Jeffrey Berman – and the inclusion of an EcoSmart Fire provides the requisite soothing environment.



Read more about this case study at  
[ecosmartfire.com](http://ecosmartfire.com)



**Oral Roberts University, USA**  
**Model: BK5 x 3**

Oral Roberts University has created a perfect spot for reading a book or gathering with friends on campus.  
Photo: © Melissa Lukenbaugh



Fuorisalone 2010, Italy  
Model: BK5 x 3

A series of flames create a dramatic wall of fire at an interior design exhibition in Italy.

**Chikusenso Mt Zao Onsen Resort & Spa, Japan**  
**Model: ABB**

Situated underneath an impressive bronze bell, is EcoSmart's largest round burner, whose dancing flame contrasts beautifully with the solid structure suspended above.







Hamton's Haven Development, Australia  
Model: AB3 (Featuring: Loft 3 Fire Screen accessory)



**Hamton's Haven Development, Australia**  
**Model: AB3** (Featuring: Loft 3 Fire Screen accessory)

Something old, something new - whilst this installation looks quite traditional, the flue is purely there for form not function. After all, there's nothing to flue when you use clean burning e-NRG bioethanol.

Oswald Down South Home, Perth Australia  
Model: AB8

Build a traditional firepit with stone or brick and you've got an instant gathering space.







“ When it came to setting a scene and drawing people in and making them feel comfortable, the EcoSmart Fire was the one and only choice.”

JASON HODGES  
GREENART GARDENS, AUSTRALIA



2010 Melbourne International Flower  
& Garden Show, Melbourne Australia

Model: AB3 (Featuring: Loft 3 Fire Screen accessory)

Australian TV personality and celebrity gardener Jason Hodges fondly remembers sitting around an open fire as a child. Today Jason loves working with EcoSmart Fire to set the scene for many of his landscape designs.



Read more about this case study at  
[ecosmartfire.com](http://ecosmartfire.com)



2015 Melbourne International Flower  
& Garden Show, Melbourne Australia  
Model: AB8

Winner of the 2015 Landscaping Victoria Boutique Award,  
'Pipe Dream' by Alison Douglas Design used an EcoSmart  
outdoor fire feature to create a low maintenance sanctuary for  
small suburban sites.

“It allowed us to use fire within close proximity to water. The clean, modern shapes created flexibility when designing and allowed us to incorporate the piece within an individual garden feature.”

MICHAEL REED  
FABRIC TEN, UK



Fabric Ten, UK  
Model: AB8

Where water and fire meet: UK design team Fabric Ten showcase a stunning water feature incorporating the EcoSmart AB8 Burner.



Read more about this case study at  
[ecosmartfire.com](https://ecosmartfire.com)



**The Farmer's Daughter, USA**  
**Model: AB8**

EcoSmart's circular burner generates a beautiful large-scale flame at this "fork to farm" restaurant located in Los Angeles, California. The rustic installation complements the bucolic décor while providing an unobtrusive smoke-free flame for patrons.



**Commercial Showroom, Sydney Australia**  
**Model: VB2**

Regardless of whether it's an Edwardian, Federation, Art Deco or Art Nouveau fireplace, EcoSmart's VB2 Burner will seamlessly slot in – instantly transforming an environmentally polluting wood-burning design into an eco-friendly fire solution.



Living Area  
Model: FLEX104.IL.BX1





**Built-in**

# **FIREPLACE INSERTS**



Model: FLEX18PN

Bring comfort and warmth to smaller spaces with the clever inclusion of a peninsula fireplace.





**Model: FLEX18SS x 4**

A series of flames sets the scene in this games room. You can choose to light some or all depending on the weather.



**Model: FLEX32SS**

We are big believers in removing the TV screen from being our primary focus in the living room. Let the conversation begin.



**Model: FLEX32SS**

It's not hard to imagine sitting out here in the evening  
- create your perfect space to unwind.



**Southern Ocean Lodge, Kangaroo Island Australia**  
**Model: 650SS with BK5 Burner**  
**Equivalent model: FLEX32SS**

The ability to integrate the streamlined design of the Fireplace 650SS into a contemporary space was the key factor in choosing EcoSmart Fire for the award-winning Southern Ocean Lodge.



*Read more about this case study at*  
[ecosmartfire.com](http://ecosmartfire.com)



**Albert Park, Victoria Australia**  
**Model: 650SS with BK5 Burner**  
**Equivalent model: FLEX32SS**

The flexibility of a flue-less fireplace is very appealing when it comes to designing a space.



*Read more about this case study at*  
[ecosmartfire.com](http://ecosmartfire.com)

“ We used to work mainly with traditional fireplaces, but the flexibility of a flue-less fireplace is very appealing when it comes to designing a space.”

NICHOLAS MURRAY,  
NICHOLAS MURRAY ARCHITECTS



**Celebrity Chef's Kitchen, Australia**  
**Model: 650SS with BK5 Burner**  
**Equivalent model: FLEX32SS**

A stainless steel EcoSmart Fireplace cleverly incorporated into a Corian island bench in celebrity chef Guy Grossi's kitchen provides ambiance to both the kitchen and adjoining living and dining spaces.



Read more about this case study at [ecosmartfire.com](http://ecosmartfire.com)





**Kitcheners, Sydney Australia**  
**Model: 650SS with BK5 Burner**  
**Equivalent model: FLEX32SS**

A new way of looking at kitchens. This takes capitalising on space to a whole new level.



**Nagoya B's Hotel, Japan**  
**Model: 800SS with XL500 Burner**  
**Equivalent model: FLEX32SS**

A hotel with an enviable location in the manufacturing hub of Nagoya. This 4-star establishment boasts a number of inviting features, including EcoSmart's built-in Fireplace Insert.

Fuorisalone Milan 2010, Italy  
Model: 900SS with BK5 Burner  
Equivalent model: FLEX32SS

Savvy furniture designers are using EcoSmart's indoor fire solutions to help create an atmosphere of intimacy within the chaotic and often cavernous warehouse style exhibition spaces.







**Private Residence, Sydney Australia**  
**Model: 900SS with BK5 Burner**  
**Equivalent model: FLEX32SS**

Interior designer Lynn Malone took advantage of EcoSmart's renowned installation flexibility to create an integrated solution with custom cabinetry and open fire at its core.



**1 Union Square, Manhattan USA**  
**Model: 900SS with BK5 Burner**  
**Equivalent model: FLEX32SS**

A private lounge in a centrally located New York apartment block is the epitome of style and elegance, with EcoSmart's flue-less, ventless fireplace the ideal solution for high-rise installations.



Read more about this case study at  
[ecosmartfire.com](http://ecosmartfire.com)



“The fire delivers on the sexiness without the fuss and mess of a traditional fireplace.”

PEGGY LEUNG,  
PEGGY LEUNG DESIGN



Private Residence, Japan  
Model: 1000SS with XL700 Burner  
Equivalent model: FLEX42SS

Framed by a stunning, stacked stone feature wall, this single-sided EcoSmart Fireplace includes a purpose-designed baffle insert that allows you to stabilise the flame while simultaneously increasing fuel efficiency.







**Southern Ocean Lodge, Kangaroo Island Australia**  
**Model: 650SS with BK5 Burner**  
**Equivalent model: FLEX32SS**

The ability to integrate the streamlined design of the Fireplace 650SS into a contemporary space was the key factor in choosing EcoSmart Fire for the award-winning Southern Ocean Lodge.



*Read more about this case study at*  
[ecosmartfire.com](http://ecosmartfire.com)



**Albert Park, Victoria Australia**  
**Model: 650SS with BK5 Burner**  
**Equivalent model: FLEX32SS**

The flexibility of a flue-less fireplace is very appealing when it comes to designing a space.



*Read more about this case study at [ecosmartfire.com](http://ecosmartfire.com)*



**Domain Lane Apartments, Australia**  
**Model: 1000SS with XL700 Burner**  
**Equivalent model: FLEX42SS**

Elegance - "The quality of being graceful and stylish in appearance or manner". This is a true illustration of elegant fireplaces for the Domain Lane Apartments. The black fireboxes highlight the two-tone dominant colours of dark grey, black and beige.

Credits: @glux @jcbarchitects @\_foursq





**Private Residence, Australia**  
**Model: FLEX50SS**

When designing a room using a complementary color scheme, it is important to embrace neutrals. This living area demonstrates how bold shades of blue, a vibrant orange flame, and subtle visual aesthetics come to life when contrasted with a neutral surround.



**Private Residence, Queensland Australia**  
**Model: FLEX50**

Designed by Giarola Architects, the subtle yet striking placement of the vibrant flame in this residential apartment is breathtaking. Surrounded by a dark marble that camouflages the TV above, the fireplace turns this living room into a peaceful retreat.



**Private Residence, Australia**  
**Model: FLEX68SS**

Space is the seventh principle of design, which finds its importance when combining with a view. The combination of this fireplace and ocean view is what makes it such a luxurious space at Espace residences.





**Private Residence, UK**  
**Model: FLEX104BY.BX2**

Space is the seventh principle of design, which finds its importance when combining with a view. The combination of this fireplace and ocean view is what makes it such a luxurious space at Espace residences.



“It’s a well-thought-out, contemporary heating solution.”

DIRK VAN NELLESTIJN,  
URBAN LANDSCAPES, AUSTRALIA

Private Residence, Western Australia  
Model: 1200SS with XL900 Burner  
Equivalent model: FLEX50SS

A 1200SS Fireplace has transformed the outdoor entertaining areas of one Western Australian home, providing warmth, flexibility, and an amazing aesthetic.



Read more about this case study at  
[ecosmartfire.com](http://ecosmartfire.com)





**Beachfront Penthouse, Newcastle Australia**  
**Model: 1200SS with XL900 Burner**  
**Equivalent model: FLEX50SS**

Achieving understated elegance inside this beachfront penthouse apartment in Newcastle was the prime objective for Coco Republic's Interior Design Team.



*Read more about this case study at*  
[ecosmartfire.com](http://ecosmartfire.com)



**W Residences, Hollywood USA**  
**Model: 1200SS with XL900 Burner**  
**Equivalent model: FLEX50SS**

The W hotels are known across the world for their contemporary architecture and modern chic decor, which in this case is enhanced by a clean-burning EcoSmart Fire.



**Model: FLEX68LC.BXL**  
*(Featuring: Decorative Steel Logs)*



**Model: FLEX86RC**

Corner fireplaces give you the chance to add interest to interconnecting and transitional spaces.



**Model: FLEX104BY.BXL**  
(Featuring: Decorative Steel Logs)

Bay Fireplaces provide an alluring focal point when viewed from multiple vantage points.











“ While our decision was primarily driven by the need for a flueless fireplace, the environmental aspect was definitely a plus.”

SEBASTIAN GIANFERMI  
PRIVATE CLIENT, UK

Private Residence, London UK  
Model: 1200SS with XL900 Burner  
Equivalent model: FLEX50SS

The slick design of a refurbished London apartment has been perfectly complemented by an EcoSmart Fireplace.



Read more about this case study at [ecosmartfire.com](http://ecosmartfire.com)





**Model: FLEX104RC.BXL**  
(Featuring: Decorative Steel Logs)

Make better use of an available corner setting in your floorplan with an easy to install Corner Fireplace.





**Model: FLEX104SS**

Flex provides a warm and cosy atmosphere to any commercial environment.





**Model: FLEX122BY.BX2**  
(Featuring: Decorative Steel Logs)

Add value to your home with an open fireplace. All of the fuel is housed within Flex's self-contained burner so you don't have to run a gas line or electric wires through your walls. And because e-NRG bioethanol is clean-burning you don't need a flue or a chimney.





**Merkmal Showroom, Japan**  
**Model: 650DB with BK5 Burner**  
**Equivalent model: FLEX32DB**

Cleverly designed with versatility and space in mind, the Fireplace Insert features a double opening that allows you to see the golden flame from two different outlooks.



**Model: FLEX158DB**

Flex Double Sided Fireplace's see-through design injects warmth and ambiance in two adjacent areas.



**Equilibrium Bar, Sydney Australia**  
**Model: 650DB with BK5 Burner**  
**Equivalent model: FLEX32DB**

The Equilibrium Bar in Sydney's World Square features cosy, traditionally-inspired lounge areas with see-through open fireplaces.



**Model: FLEX104IL.BX1**

Use a fire feature as a room divider to create a beautiful transition between spaces. Room dividers not only maximize spaces, but they also define rooms while acting as works of art.



Model: FLEX104IL.BX2



Model: FLEX158IL





“Many companies make functional items and many companies can conceptualise cutting-edge design: marrying the two in a way that makes sense, however, is rare. EcoSmart Fire definitely shares that same sensibility.”

FRANK CARFARO,  
DESIRON



New York Loft, USA  
Model: 650DB with BK5 Burner  
Equivalent model: FLEX32DB

New York designer Frank Carfaro has always had a passion for beautiful design and craftsmanship. When he discovered EcoSmart Fire, he knew his creative values were very much aligned.



Read more about this case study at  
[ecosmartfire.com](https://ecosmartfire.com)





“The fireplace is an important component in the design of the bar. It builds the visual focus when you approach the room and is the centre of attention.”

ANNE MARIA JAGDFELD,  
DESIGNER

Shochu Bar, Berlin Germany  
Model: 900DB with BK5 Burner  
Equivalent model: FLEX32DB

A see-through EcoSmart Fireplace has helped define the warmth and ambience - and personality - of one of Berlin's top 10 cocktail venues, Shochu Bar.



Read more about this case study at  
[ecosmartfire.com](http://ecosmartfire.com)



**Model: FLEX50BN**

Adding a fire element to your outdoor area instantly transforms the space and it becomes a favourite gathering place. It creates the ideal spot to relax, unwind, and tell stories all in good company.



Model: FLEX122BN



Model: FLEX168BN



**Nozomi Views, Japan**  
**Model: 800DB with XL500 Burner**  
**Equivalent model: FLEX32DB**

Providing welcoming warmth for ski resort guests, EcoSmart's double-sided fireplace creates an energy efficient heating solution for eco-conscious accommodation providers.





**Private Residence, Japan**  
**Model: 1000DB with XL500 Burner**  
**Equivalent model: FLEX42DB**

Offering unprecedented design and installation flexibility, this rectangular EcoSmart Fireplace can be front or back fitted within custom cabinetry where viewing a fire from both sides enhances two adjacent environments.

“ You pay for the quality of the product, and other brands just can’t compare to EcoSmart with their design.”

ANTHONY NADER,  
RAW HAIR



Raw Hair, Sydney Australia  
Model: 1200DB with XL500 Burner  
Equivalent model: FLEX42DB

Opulent, with raw details and industrial design features, this new Sydney salon, owned by celebrity hair stylist Anthony Nader, needed a fiery focal point that encapsulated quality, contemporary style and a polished, raw finish.



Read more about this case study at  
[ecosmartfire.com](http://ecosmartfire.com)





“The aesthetics [of the EcoSmart Fire] I figured would be the key component, but it is much cosier than I expected.”

DOUGLAS CAMPBELL,  
HOME OWNER



Private Residence, Australia  
Model: FLEX50DB

The Flex Double Sided fireplace was selected to feature in two joining rooms, the sitting room and the pool room. The fireplace was chosen for its aesthetics as well as creating two warm and cosy spaces.



**Crowne Plaza Hotel, Terrigal Australia**  
**Model: 1800DB with 3 x BK5 Burners**  
**Equivalent model: FLEX68DB**

An impressive see-through stone and stainless steel fireplace with a trio of EcoSmart Burners create a sense of warmth and style in this resort hotel on the NSW coast.







Private Residence, Japan  
Model: 1100CV





**Max Brenner Head Office, Australia**  
**Model: 1100CV**

Max Brenner is renown for yummy chocolate and feeling good, which is the perfect match for the warm welcome guests receive when visiting their new corporate headquarters.



Interior Blossoms, Australia  
Model: 720CV



**Model: Martini 50**  
*(Featuring: Optional Fire Screen)*

Freestanding  
**FIRE  
TABLES**



Private Residence, Japan  
Model: Ark 40  
(Featuring: Optional Fire Screen)

A curvaceous conversation pit that brings friendship and fire together in one slick mix.



*(Featuring: Optional Fire Screen)*



**Commercial Space, Japan**  
**Model: Ark 40 x 3**

With a wide lip to perch a drink on, and an unobtrusive shape that suits all types of décors and settings, EcoSmart's Ark fire furniture creates an instant gathering space.





**Model: Ark 40 x 2**  
(Featuring: *Optional Fire Screen*)



*(Featuring: Optional Fire Screen)*

Commercial Space, Japan  
Model: Base 40  
(Featuring: Optional Fire Screen)

This multi-function table gives you the best of both worlds – a coffee table combined with an environmentally-friendly fire pit.





Commercial Space, Japan  
Model: Base 40





*(Featuring: Optional Fire Screen)*



Private Residence  
Model: Cosmo 50  
(Featuring: Optional Fire Screen)



**Private Residence, Japan**  
**Model: Cosmo 50**

Japanese style integrates clean and peaceful simplicity while balancing order and a love for natural beauty. Thousands of years steeped in tradition have influenced Japan's architecture and interior design aesthetic, resulting in a serene decorating touch.





Private Residence, Japan  
Model: Cosmo 50  
(Featuring: Optional Fire Screen)

**Private Residence**  
**Model: Manhattan 50**  
*(Featuring: Optional Fire Screen)*

Fuelled by environmentally-friendly bioethanol, the fully integrated, Manhattan's multifunctional design means homeowners can enjoy the ambiance and tranquility of a real fire without the inconvenience of burning real wood – that means no more embers, ash and soot to clean up.





*(Featuring: Optional Fire Screen)*



Private Residence, Japan  
Model: Manhattan 50  
(Featuring: Optional Fire Screen)





*(Featuring: Optional Fire Screen)*



**Private Residence**  
**Model: Martini 50**

Elegant, simple, and ever so functional, the Martini Fire Table is perfect for entertaining. With sufficient space to set down food or drinks, the fire becomes a welcoming destination for guests to gather around.



Private Residence, Japan  
Model: Martini 50  
(Featuring: Optional Fire Screen)







*(Featuring: Optional Fire Screen)*

**Private Residence, Japan**  
**Model: Wharf 65**

Blending the simplicity of an outdoor fire pit with the functionality of a standalone table, EcoSmart's Wharf fire table adds style and practicality to any architectural environment.







**Private Residence, Japan**  
**Model: Wharf 65**  
*(Featuring: Optional Fire Screen)*

Ideal for courtyards, patios, pool decks and terraces, Wharf's all-weather, earthy design evokes the atmosphere of an open flame minus the by-products associated with a wood-burning fireplace.



Stone Lotus Landscapes, Australia  
Model: Mix 600  
Photographer: Creative Events Photography

Freestanding

# FIRE PITS

The Grounds, Alexandria

Model: Stix

Stix consists of varying-sized tubular stainless steel 'sticks', creating a visually striking and practical fire for indoor and alfresco environments.







“The EcoSmart Stix fires are very visually effective on their own, but they are even more so when placed together in a group.”

REBECCA OTTO  
SIMEONE DEARY DESIGN GROUP



**Allegro Hotel, Chicago USA**  
**Model: Stix x 3**

Drama, glamour, music and movement – these are just some of the theatrical elements the award-winning Simeone Deary Design Group captured in their re-design of the boutique Allegro Hotel in the heart of downtown Chicago.



Read more about this case study at  
[ecosmartfire.com](http://ecosmartfire.com)





**Stilhof Showroom, Germany**  
**Model: Stix**

Creating a cosy living space to showcase the design benefits of the EcoSmart Stix is the premise behind the Stilhof Showroom in Munich.



**Private Residence, Japan**  
**Model: Stix**

What looks like stacked campfire sticks is actually a sophisticated piece of fire furniture.



New American Home, USA  
Model: Stix x 2

Making a distinctive architectural statement can be as simple as adding a freestanding fire.



Read more about this case study at  
[ecosmartfire.com](http://ecosmartfire.com)







Private Residence  
Model: Pod 40  
(Featuring: Optional Fire Screen)



**Private Residence**  
**Model: Pod Series**  
*(Featuring: Optional Fire Screens)*

The Pod Series is available in 2 different sizes – the smaller “Pod 30” and the larger “Pod 40”. Display together or separately to instantly add life to any space.







**Private Residence**  
**Model: Pod 30**  
*(Featuring: Optional Fire Screen)*

The POD Series can be placed on a pool deck or patio, or positioned in an open space to enhance the atmosphere and create a distinctive design feature.



Private Residence  
Model: Pod 40  
(Featuring: Optional Fire Screen)



**Chelsea Flower Show, UK**  
**Model: Glow**

EcoSmart Fire's signature clean lines are designed to fit within a modern architectural space, while enhancing the contemporary aesthetics of today's living environments.



**Private Residence, Japan**  
**Model: Glow** (featuring Cyl)

Sitting side by side in this outdoor patio the large Glow and small Cyl models are a great combination. The absence of restrictive cables or gas connections means these full portable models can be enjoyed virtually anywhere.





**Private Residence, Japan**  
**Model: Glow**

Elegantly understated and able to fit into a variety of settings, Glow's soft curves and industrial materials create a modern centrepiece for outdoor entertaining.





**The Grounds, Sydney Australia**  
**Models: Mix Fire Bowls**

Mix's simple, elegant shape combined with entrancing flame delivers generous amounts of warmth and ambience.





**Interior Blossoms, Australia**  
**Model: Mix 600**

Blending the simplicity of an outdoor fire pit with classic luxury, EcoSmart Fires' Mix Fire Bowls will be the centre of attention at every gathering.



**Stone Lotus Landscapes, Australia**

**Model: Mix 850**

Created for courtyards, patios, pool decks and terraces, the all-weather, earthy design delivers the ambience of an open fire minus the mess, odour, sparks and soot.

**Photo: Creative Events Photography**



New American Home, USA  
Model: Mix 850

The elements of fire and earth create a simple  
yet captivating atmosphere.







**Commercial Space, Japan**  
**Model: Cyl**

With an AB3 ethanol burner at its core, Cyl delivers up to 11 hours of burning time - perfect for illuminating an event or just enhancing the ambiance.

*Not available in all countries.*



**Private Residence, Japan**  
**Model: Mini T**

Small in stature at just 462mm [18in] high, the freestanding, portable Mini T is the robust solution for illuminating spaces and creating warmth and ambience.

*Not available in all countries.*







**KimberModern Hotel, Austin Texas USA**  
**Model: Mini T**

EcoSmart's signature clean lines perfectly complement the design style of this outdoor bar, with Mini T fires providing a chic enhancement to the contemporary aesthetics.

*Not available in all countries.*



**Private Residence, Sydney Australia**  
**Model: Mini T x 2**

EcoSmart's Mini T is a stainless steel and glass fire feature perfect for outdoor entertaining, used either as accents for garden landscapes or as functional lighting along pathways and step areas.

*Not available in all countries.*

Hiramatsu Hotels & Resorts Kashikojima, JAP  
Model: Lighthouse 150 x 4  
*Not available in all countries.*





**Hiramatsu Hotels & Resorts Kashikojima, JAP**  
**Model: Lighthouse 150 x 4**

As the name evokes, EcoSmart's Lighthouse Series provides a clear and commanding light – perfect for illuminating outdoor areas and providing an impressive focal point for any alfresco location.

*Not available in all countries.*









**Commercial Space, Japan**  
**Model: Lighthouse 150 x 3**

Made with weatherproof materials including toughened glass and classic concrete composite, EcoSmart's Lighthouse fire furniture features an efficient AB3 ethanol burner, which burns for up to 11 hours.

*Not available in all countries.*





Commercial Space, Japan  
Model: Igloo

Freestanding

# DESIGNER FIREPLACES





Private Residence, Japan  
Model: Ghost

*(Left image - Featuring: Decorative Log Set*



Private Residence, Japan  
Model: Ghost



Private Residence, Japan  
Model: Ghost

The EcoSmart Ghost is designed with a futuristic appeal to enhance contemporary décors.





**Private Residence, Japan**  
**Model: Ghost**

No need for cabling, gas connecting, chimneys or flues provides creative freedom for homeowners and interior designers.



**Private Residence, Japan**  
**Model: Ghost**

Glass surrounds create a disappearing effect when EcoSmart's Ghost fireplace is placed in front of windows, doors and feature walls.



“Fire was incorporated in the interior to add prominence and warmth to the contemporary design. This created a focal point while creating a more welcoming space.”

LYNDSAY JANSEEN  
BLUE HERON INTERIOR DESIGN

New American Home, USA  
Model: Ghost

The reflective glass panels of EcoSmart's Ghost fireplace provides 360-degree views of the dancing flame.



Read more about this case study at [ecosmartfire.com](http://ecosmartfire.com)

**SKYE Suites Sydney, Australia**  
**Model: Ghost x 2**

As you walk through the SKYE Suites Sydney entrance, you are warmly greeted by two Ghost fireplaces.







Lumiere, Sydney Australia  
Model: Igloo

Made entirely of glass and stainless steel, EcoSmart's Igloo fire feature is a sleek and modern update to the traditional fireplace.







“For our home the particular design constraints did not allow for a flued fireplace system. [The EcoSmart Fire] was the perfect complement to my vision.”

LUIGI PREZIUSO,  
BDA BUILDING SOLUTIONS, AUSTRALIA

Private Residence, Sydney Australia  
Model: Igloo

Renowned Australian builder and designer Luigi Prezioso explains why he chose an EcoSmart Fire to heat his own home on Sydney's Northern Beaches.



Read more about this case study at  
[ecosmartfire.com](https://ecosmartfire.com)





Commercial Space, Japan  
Model: Igloo



**Private Residence, Japan**  
**Model: Igloo**

Taking fire design to new heights. The Igloo works perfectly with this dazzling city skyline.



The C Fire, Australia  
Accessories: Twin Feet Fixings & Custom Fireplace  
Model: BK5

Optional

# SCREENS & ACCESSORIES



**2015 Melbourne International Flower  
& Garden Show, Melbourne Australia**  
**Accessory: Twin Feet Fixings**  
**Burner: XL900**

Used to stabilise the flame in windy conditions and add further safety and comfort, EcoSmart's Firescreen accessories are made with toughened glass, stainless steel fittings and frosted polycarbonate connectors.





**Commercial Space, Japan**  
**Accessories: Plasma Fire Screen**

Featuring elegant circular handles and classic stainless steel feet, the Plasma Fire Screen provides additional safety and stability to your EcoSmart fireplace.



**Accessory: Decorative Steel Logs**  
**Model: FLEX122BY.BX2**  
Made from stainless steel with a patina finish, add a finishing touch to your installation with these stunning decorative logs. Available in Brass or Copper.



**Commercial Space, Japan**  
**Accessory: Ghost Fire Screen**  
**Model: Ghost**

The Ghost Fire Screen attaches seamlessly to the front face of the Ghost Portable Fireplace.



**The C Fire, Australia**  
**Accessories: Twin Feet Fixings & Custom Fireplace**  
**Model: BK5**

Available in a variety of shapes and sizes, EcoSmart's stylish Fire Screens reduce fuel consumption by minimising the impact of wind on the flame.





**Moama Bowling Club, Australia**

**Accessory: Loft 8**

**Model: AB8**

The sumptuous setting in this popular community hotspot is complemented by EcoSmart's stainless steel indoor fire feature, which works beautifully with the circular conversation pit.  
*(Image indicative only)*



**Merkmal Showroom, Japan**

**Accessory: Loft 3**

**Model: AB3**

This minimalist table top installation was achieved through the use of a Top Tray, which provides a compulsory barrier between the burner itself and the timber of the table. The Loft Fire Screen adds to the reflective beauty of the flame at the same time as enhancing flame stability.

*(Image indicative only)*

# WHY e-NRG FUEL?



BEST FLAME



CLEAN BURNING



LOWEST ODOUR



LONGEST BURN TIME



ORDER ONLINE



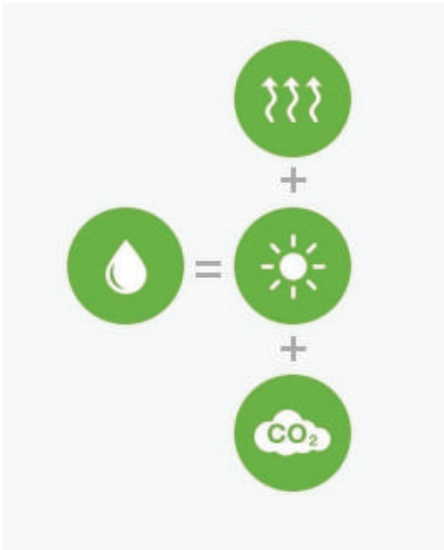
**Achieving a beautiful, vibrant flame in your ethanol fireplace is easy when you use the right fuel.**

Bioethanol is pure alcohol. The combustion of bioethanol is clean, which makes it an efficient and effective source of heat because there is no soot, ash or harmful emissions that need to be extracted through a flue - meaning all the heat stays in your room.

Specifically packaged and labelled for use in liquid ethanol fireplaces, e-NRG Bioethanol is formulated with the perfect blend of ingredients to give you a brilliant orange flame in your flue-less fireplace.

**Fire up your bioethanol fire with the highest quality, cleanest burning bioethanol available, visit [e-NRG.com](http://e-NRG.com)**





**Clean Burning**

e-NRG produces no harmful emissions - just heat, steam and carbon dioxide, which is reabsorbed by plants.



**Fast Refilling**

e-NRG bottles pour 8 times faster than the competition.

**Packaged to Perform**

e-NRG offers the safest and most efficient fueling process on the market.



**Flame Arrester**

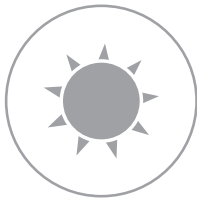
The bottles are fitted with a flame arrester for safe refilling.

e-NRG is supported by an operational procedure to ensure it's used in the safest way.

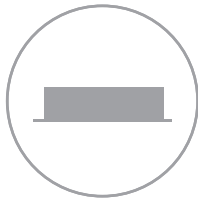
# FLUID™ CONCRETE TECHNOLOGY



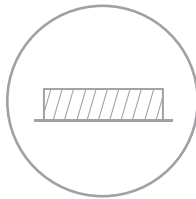
STAIN RESISTANT



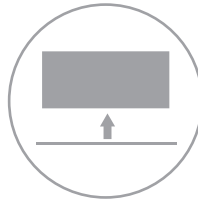
UV RESISTANT



CUSTOM FINISH



DURABLE SURFACE



LIGHTWEIGHT



## Timeless Pieces from EcoSmart Fire

EcoSmart fire features are synonymous with quality, substance and enduring style and now those same qualities can be applied to our extensive concrete collection.

Incredibly strong yet relatively lightweight, EcoSmart's concrete products incorporate revolutionary Fluid™ Concrete Technology, which is eight times the tensile strength of common Portland concrete. Fluid features a stain and impact-resistant barrier that protects the concrete from environmental weathering – even under extreme conditions and long UV exposure.

Fluid's customised curing process allows each EcoSmart piece to rest and set in quality controlled conditions, producing a consistently beautiful indoor and outdoor collection of designer concrete that last longer than traditional composites.

Visit [fluidconcrete.com](http://fluidconcrete.com)



# AROUND THE WORLD



EcoSmart Fire is represented by an extensive network of distributors, resellers and agents around the world. If you can't find who you are looking for, or someone close to you, visit [ecosmartfire.com](https://ecosmartfire.com)

ECOSMART FIRE IS DESIGNED AND MANUFACTURED BY MAD DESIGN GROUP.

Interested in representing or retailing EcoSmart Fire in your country?  
Contact your local distributor or our Head Office today.



Reproduction of this catalogue in any manner, in any language, in whole or in part without prior written permission is prohibited. MAD Design Group reserves the right to correct any errors or misprints. All product specifications and data are subject to change without notice and believed to be correct at the time of publication. MAD Design Group, its affiliates, agents, and employees, and all persons acting on its or their behalf (collectively, "MAD Design Group"), disclaim any and all liability for any errors, inaccuracies or incompleteness contained herein or in any other disclosure relating to any product. MAD Design Group disclaims any and all liability arising out of the use or application of any product described herein or of any information provided herein to the maximum extent permitted by law. The product specifications do not expand or otherwise modify MAD Design Group's terms and conditions of purchase, including but not limited to the warranty expressed therein, which apply to these products. No license, express or implied, by estoppel or otherwise, to any intellectual property rights is granted by this document or by any conduct of MAD Design Group. Customers using or selling MAD Design Group products not expressly indicated for use in such applications do so entirely at their own risk and agree to fully indemnify MAD Design Group for any damages arising or resulting from such use or sale. Please contact authorised personnel from MAD Design Group to obtain written terms and conditions regarding products designed for such applications. International Patent Pending – Trademarks Pending – All Designs Registered. V0320

ECO  
SMART  
FIRE  
.COM

ecosmart<sup>™</sup>  
Fire